

Wabash Local Trax

Public Information
Meeting

March 9, 2021



What is Local Trax?



LOCAL TRAX

Rail Overpass
Program

Highway-Rail Grade Crossing Safety Action Plan will:

- Reduce the number of public-grade crossings
- Encourage grade separations where possible to bridge over busy rail lines
- Focus attention on grade crossings with a recent history of multiple collisions

3



LOCAL TRAX

Rail Overpass
Program

The Team:

- Managed by INDOT
- Design by a consultant (WSP) and
- YOU - The City of Wabash

Funding:

Funding Source	Design Fees	Construction and ROW
INDOT	100%	80 %
Wabash	0 %	20 %

4



Project Development and Recommendations



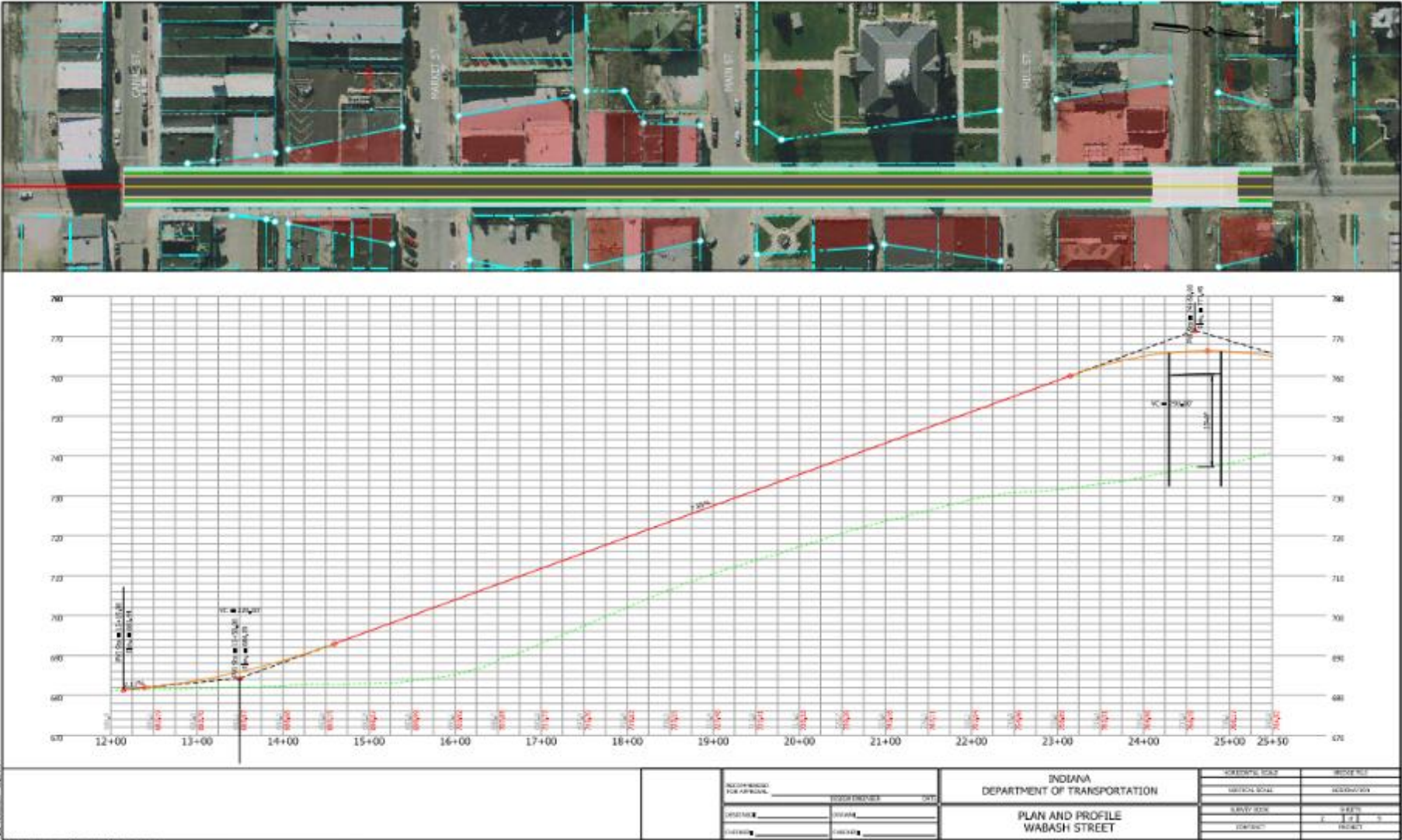
Engineering Assessment

Looked at six potential project sites:



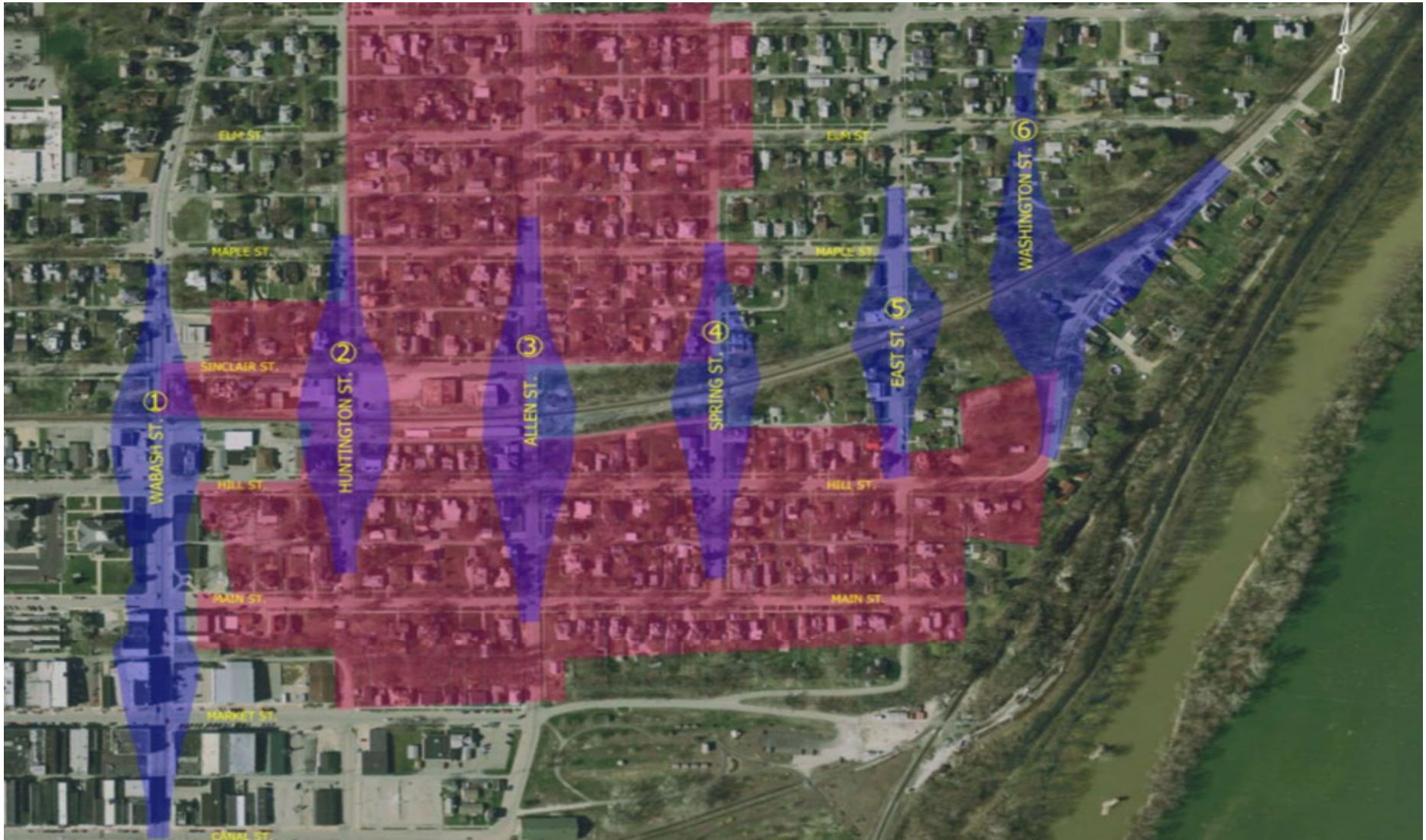
Engineering Assessment

Looked at six potential project sites:



Engineering Assessment

Evaluated the impacts at each site:



8



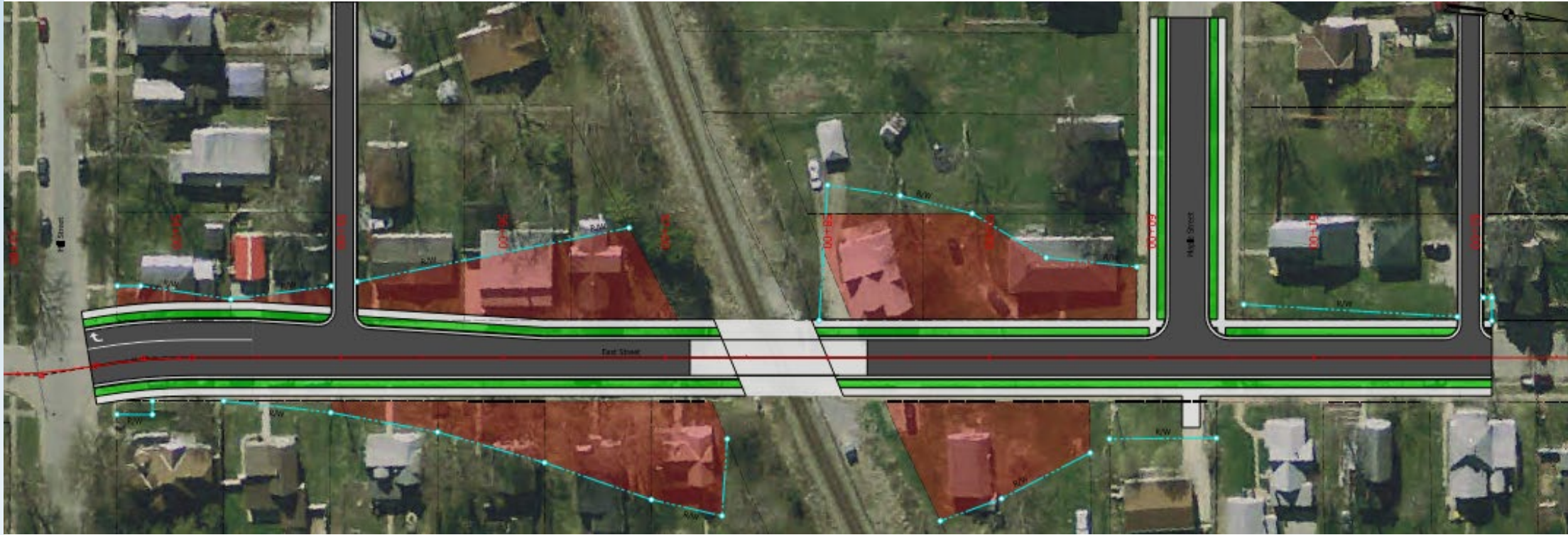
Engineering Assessment

Evaluated the impacts at each site:

Alternative	Functional Classification	Project Length (ft.)	Number of ROW parcels impacted	Number of ROW parcels in Historic District affected	Number of Cross Streets that needs to be reconstructed	Advantages	Disadvantages
1. Wabash Street	Minor Arterial	1705	43	2	5	Major roadway, fewer number of parcels in historic district affected.	High project length, large number of ROW parcels impacted, high number of cross streets need to be reconstructed
2. Huntington Street	Local	1042	18	18	3	Fewer number of ROW parcels affected.	Significant impact on parcels in historic district.
3. Allen Street	Major Collector	1278	19	17	4	Major roadway with high traffic volume	High project length
4. Spring Street	Local	1040	16	10	3	Less number of ROW parcels affected	Significant impact on parcels in historic district, Closing Spring Street & Hill Street intersection would cause significant impacts to the traffic operations.
5. East Street (Recommended)	Major Collector	865	19	3	1	Low project length, low impact on parcels in historic district, only one cross street (Maple Ave) needs to be reconstructed.	Impact on parcels in historic district
6. Washington Street	Local	1380	24	1	2	Minimal impact on parcels in historic district.	High project length, additional construction of non-existing roadway required.



East Street over Norfolk Southern



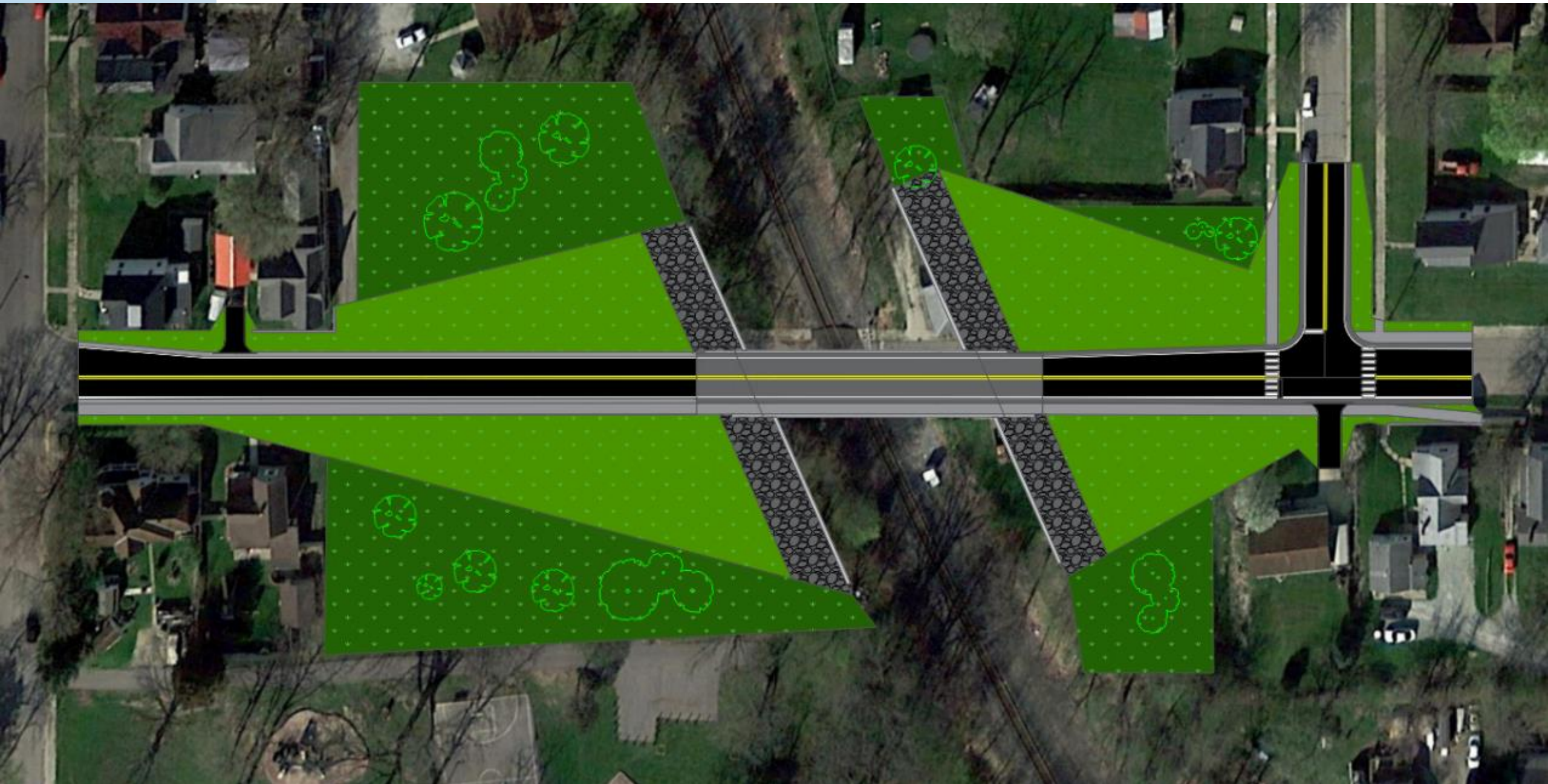
Benefits:

- Shortest project length
- Least number of intersections impacted
- Least number of historic properties impacted
- One of the alternates with the lowest number of right-of-way parcels impacted

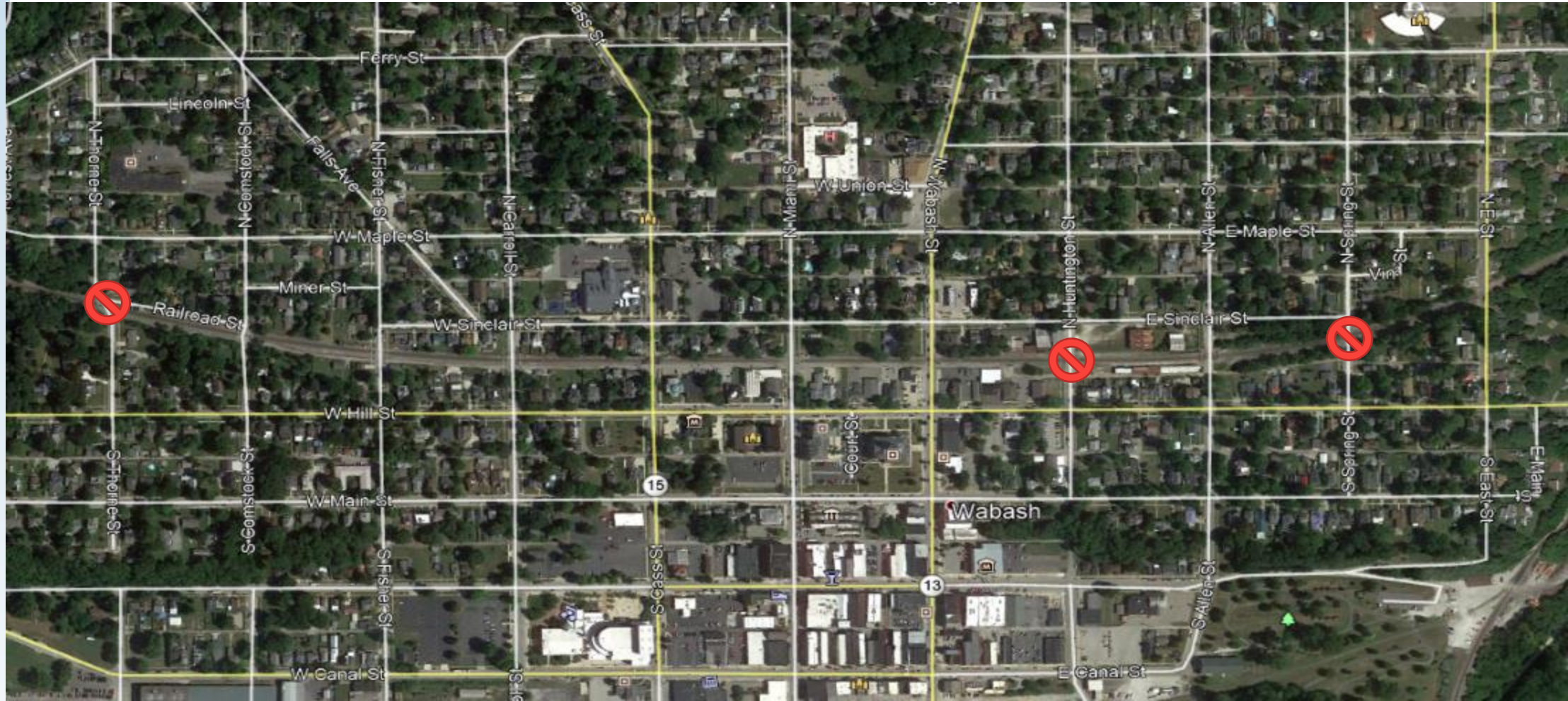
Features:

- Uninterrupted north-south traffic during train events
- Sidewalk with upgraded crossings at Maple Ave. and Hill St.
- Pedestrian lighting
- Protective fencing on the bridge

East Street over Norfolk Southern



At-Grade Crossing Closures



Crossings Proposed for Closure:

- Spring
- Huntington
- Thorne

12



Schedule



LOCAL TRAX

Rail Overpass
Program

Schedule:

- Public hearing - Late 2021 or early 2022
- Start of right-of-way acquisition - Early spring 2022
- Public information meeting - Early fall 2022
- Construction - Summer 2023

14



Questions?

