

Wabash Local Trax

Public Information
Meeting

April 26, 2022



What is Local Trax?

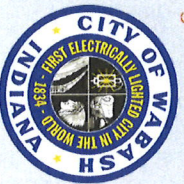


LOCAL TRA Rail Overpass Program

Highway-Rail Grade Crossing Safety Action Plan will:

- Reduce the number of public-grade crossings
- Encourage grade separations where possible to bridge over or under busy rail lines
- Focus attention on grade crossings with a recent history of multiple collisions

3



LOCAL TRA

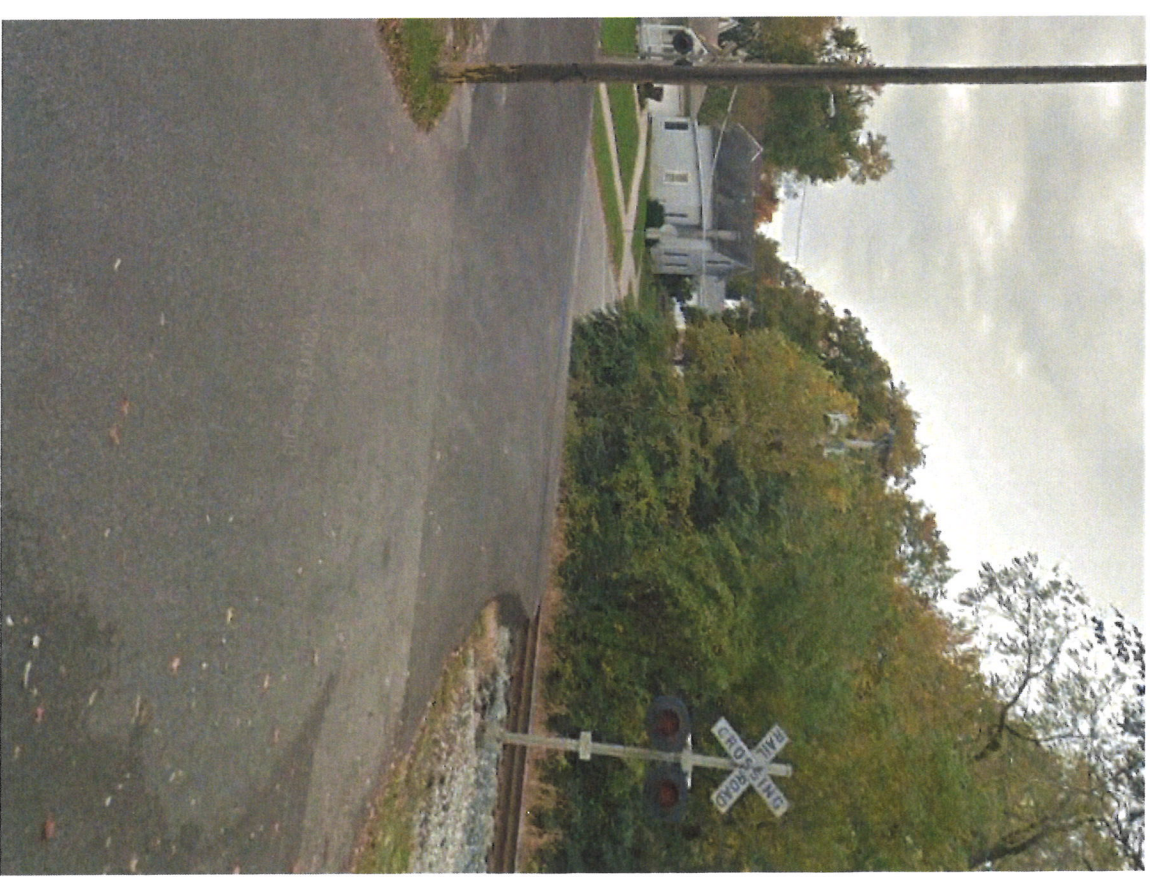
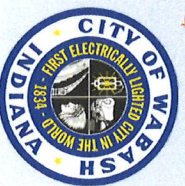
Rail Overpass
Program

The Team:

- Managed by INDOT
- Designed by a Consultant (WSP) and
- YOU - The City of Wabash

Funding:

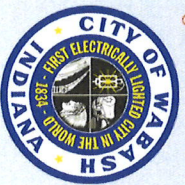
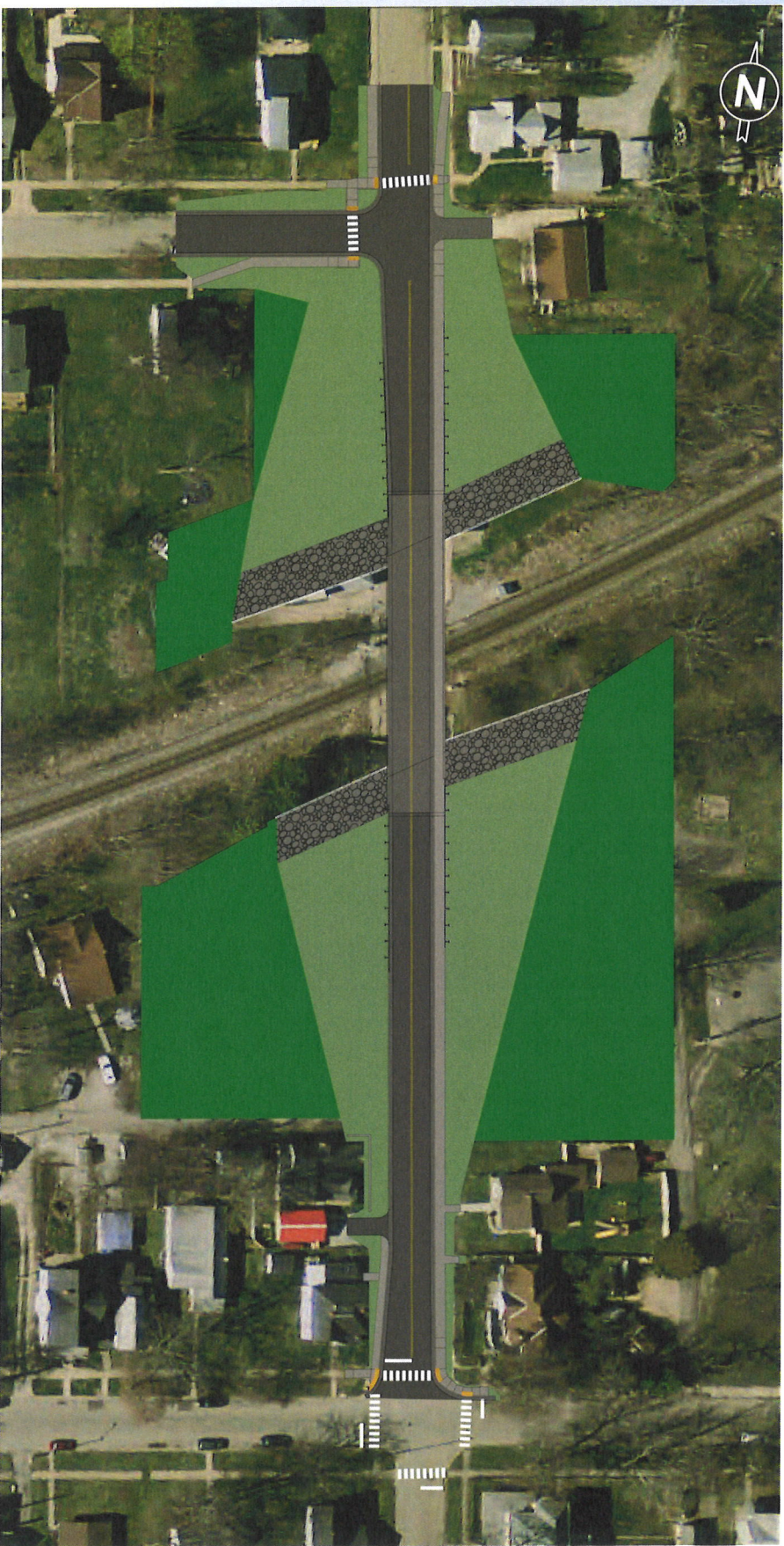
Funding Source	Design Fees	Construction and ROW
INDOT	100%	80%
Wabash	0%	20%



Project Development and Recommendations



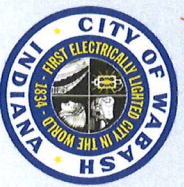
East Street over Norfolk Southern



East Street over Norfolk Southern



7



Benefits:

- Shortest project length
- Least number of intersections impacted
- Least number of historic properties impacted
- One of the alternates with the lowest number of right-of-way parcel impacts

Features:

- Uninterrupted North-South traffic during stopped train events
- Sidewalk with upgraded crossings at Maple Ave and Hill Street
- Protective fencing on the bridge

East Street over Norfolk Southern



8



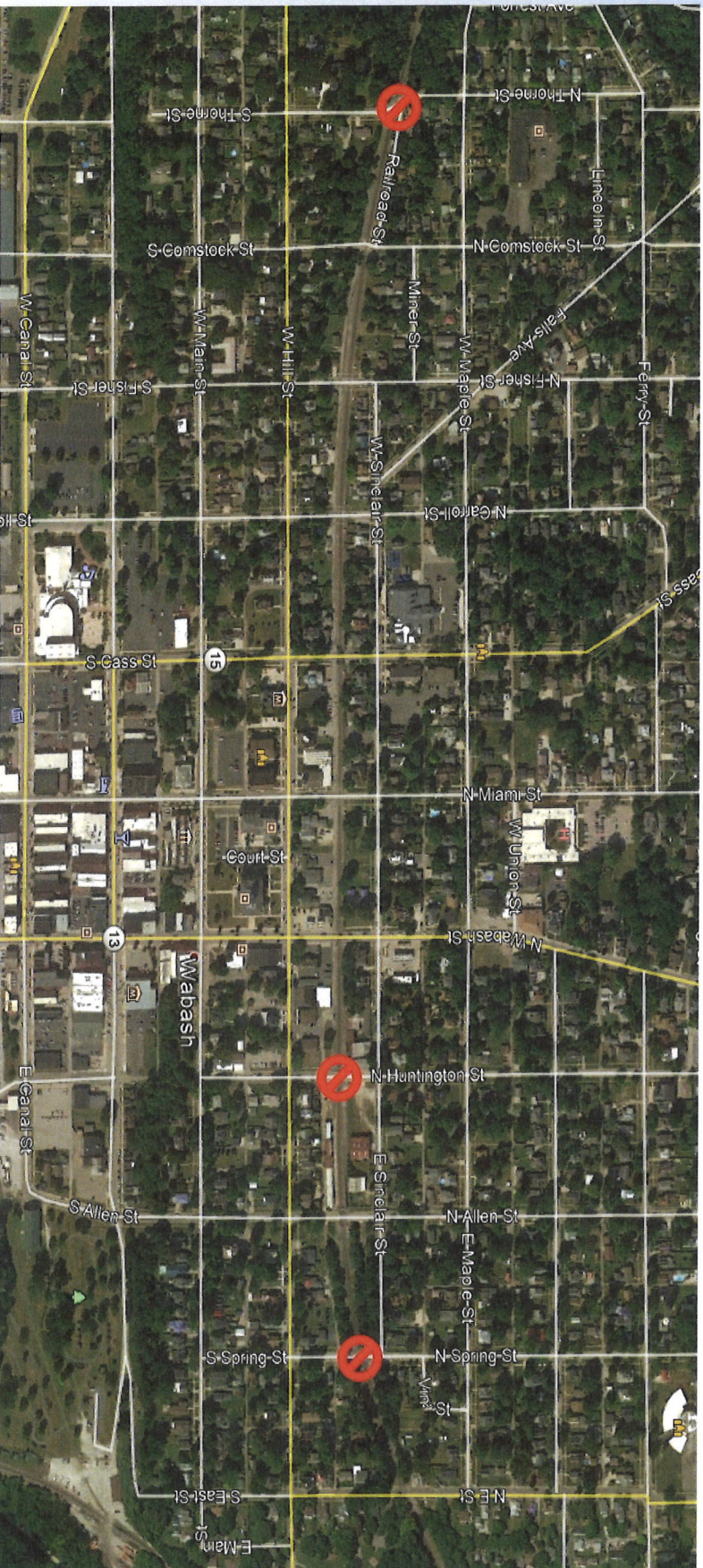
Project Development:

- Currently at 60% Design
- Elevations and Project Footprint finalized
- Continuing to develop details for final design
 - Lighting
 - Structural Design
 - Environmental

Costs:

- The estimated total cost is \$11.1 million,
 - \$9.2 million of which will be paid through the state-funded Local Trax grant and Federal Funding.
 - The remaining costs will be covered by local funds.

At-Grade Crossing Closures



Crossings Proposed for Closure:

- Spring
- Huntington
- Thorne



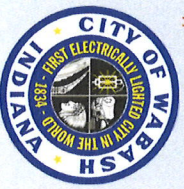


Schedule

LOCAL TRA Rail Overpass Program

Schedule:

- Public Information Meeting – April 2022
- Public Hearing – November 2022
- Environmental Complete – December 2022
- Right of Way
 - Appraising to be finished in last quarter of 2022
 - Offers to be early 2023
- Construction – Summer 2024
- Open – Fall 2024



Right-of-Way

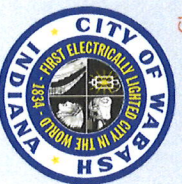


LOCAL TRA Rail Overpass Program

Right of Way:

- Relocations: 10
- Paused in 2022 because of project funding changes
- Environmental Investigations must complete before resuming R/W purchasing
- Right of Way Schedule
 - Appraising to be finished in last quarter of 2022
- Offers to be early 2023

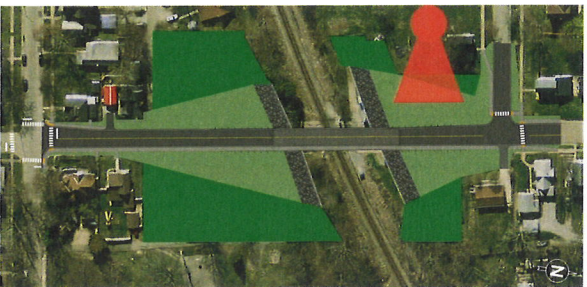
13



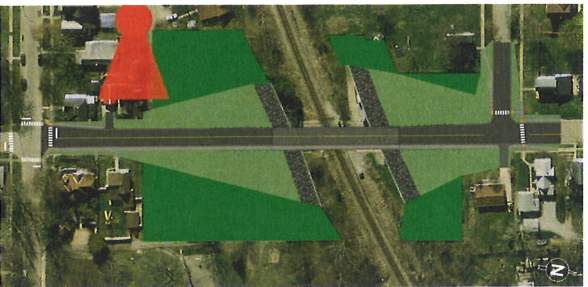
Project Walkthrough



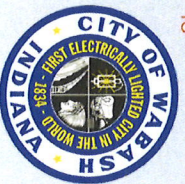
North Half of Project



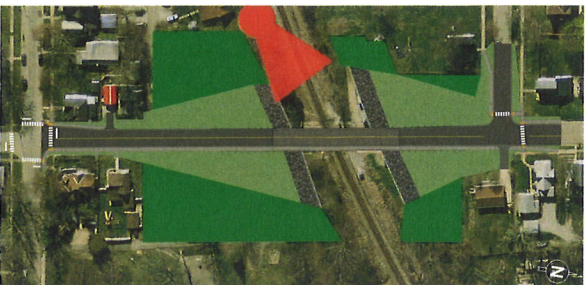
South Half of Project



16



Wabash County Bridge Number 918



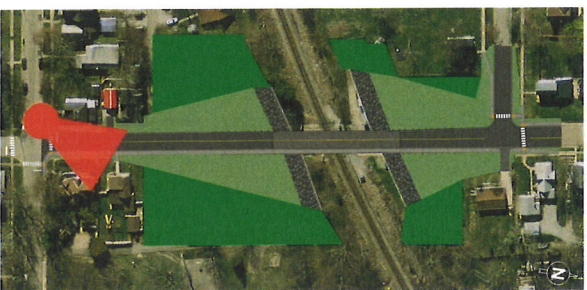
17



Standing on Hill Street, Looking North



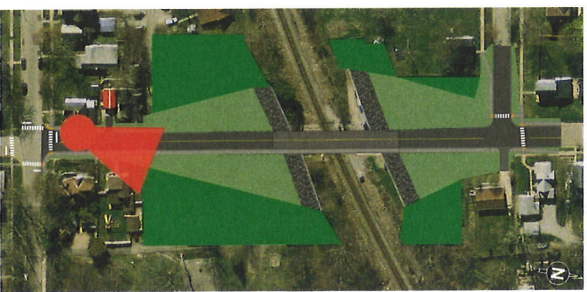
Standing on East and Hill, Looking North



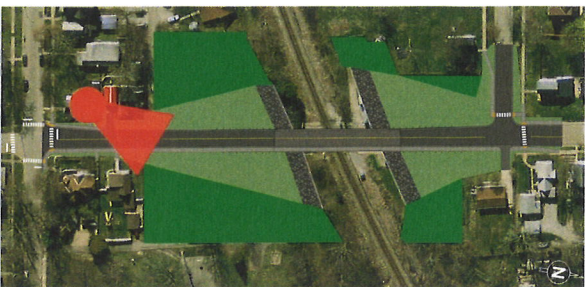
19



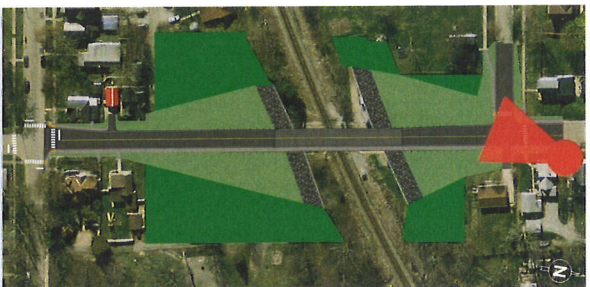
East Street Looking at 13 E



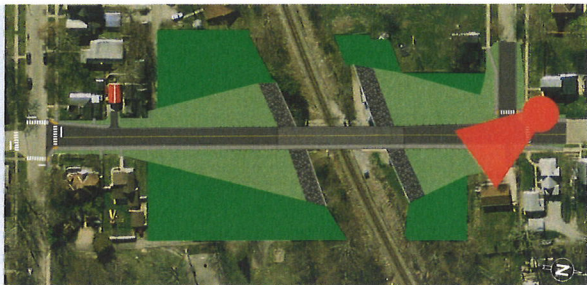
10 E Looking North at East Street



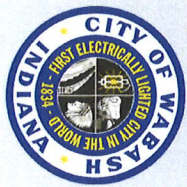
Standing in front of 225 E, Looking South



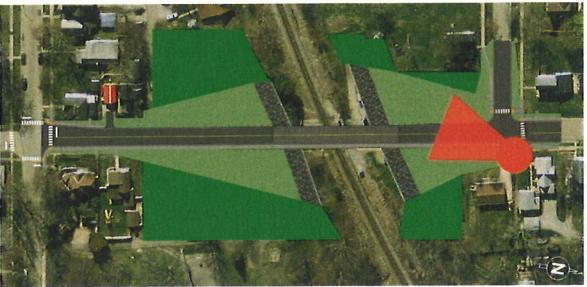
Standing at Maple and East, Looking Southeast



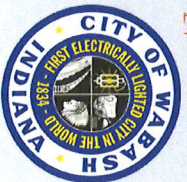
23



Standing on 123 E Drive, Looking Southwest



24





Questions?

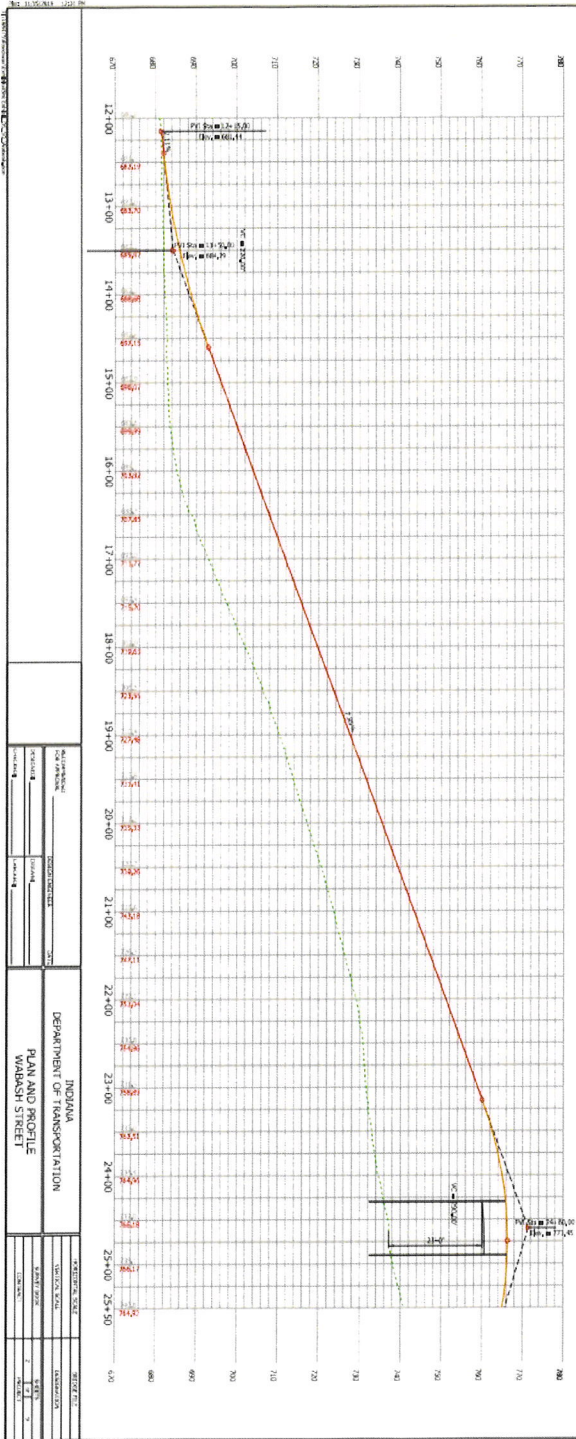
Engineering Assessment

Looked at six potential project sites:



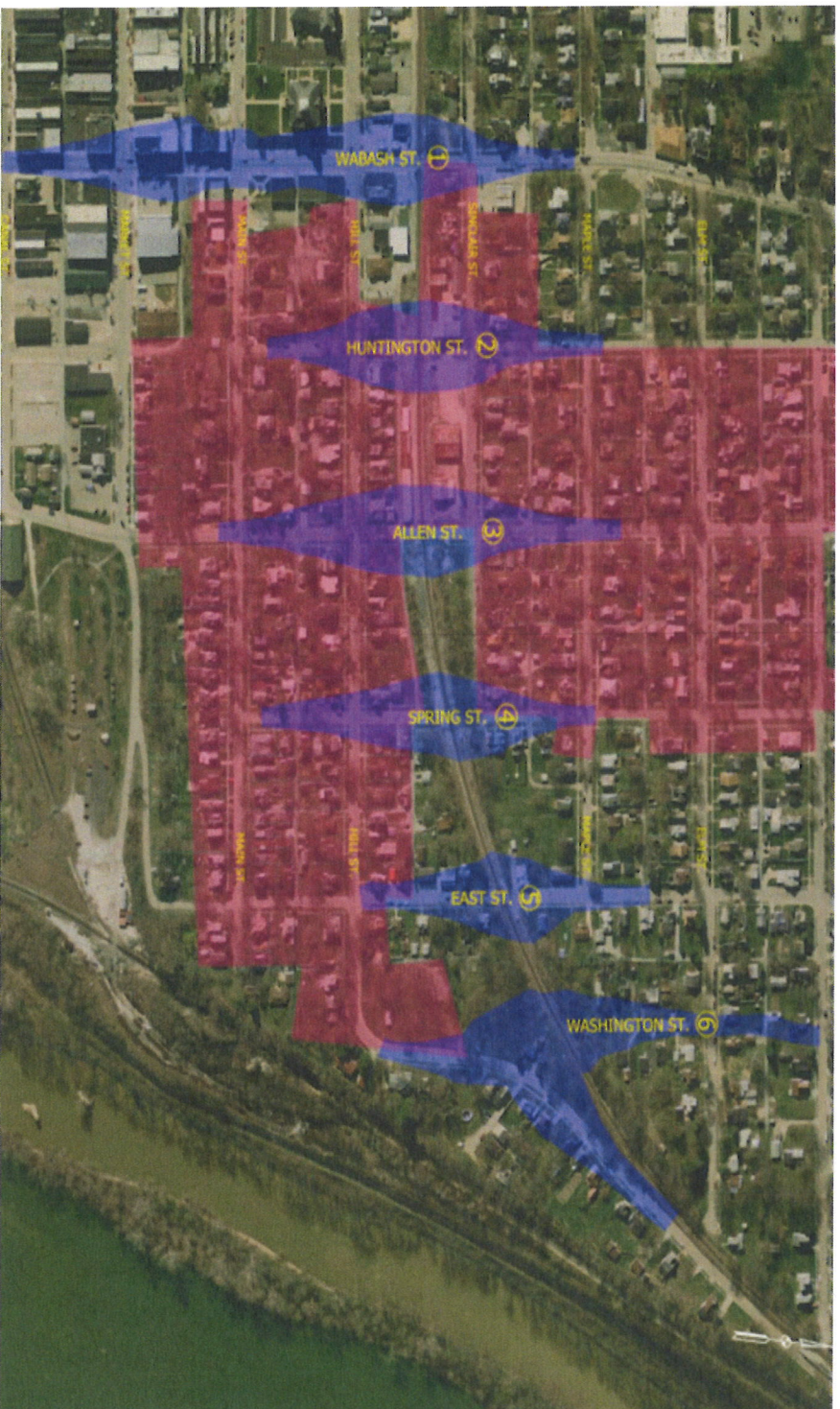
Engineering Assessment

Looked at six potential project sites:



Engineering Assessment

Evaluated the impacts at each site:



Engineering Assessment

Evaluated the impacts at each site:

Alternative	Functional Classification	Project Length (ft.)	Number of ROW parcels impacted	Number of ROW parcels in Historic District affected	Number of Cross Streets that needs to be reconstructed	Advantages	Disadvantages
1. Wabash Street	Minor Arterial	1705	43	2	5	Major roadway, fewer number of parcels in historic district affected.	High project length, large number of ROW parcels impacted, high number of cross streets need to be reconstructed
2. Huntington Street	Local	1042	18	18	3	Fewer number of ROW parcels affected.	Significant impact on parcels in historic district.
3. Allen Street	Major Collector	1278	19	17	4	Major roadway with high traffic volume	High project length
4. Spring Street	Local	1040	16	10	3	Less number of ROW parcels affected	Significant impact on parcels in historic district, Closing Spring Street & Hill Street intersection would cause significant impacts to the traffic operations.
5. East Street (Recommended)	Major Collector	865	19	3	1	Low project length, low impact on parcels in historic district, only one cross street (Maple Ave) needs to be reconstructed.	Impact on parcels in historic district
6. Washington Street	Local	1380	24	1	2	Minimal impact on parcels in historic district.	High project length, additional construction of non-existing roadway required.

